



WORLD'S BEST
ALLOY BULLBARS

East Coast Bullbars (ECB Pty Ltd)

Tel: 07 3897 5700

Fax: 07 3283 1168

ecb@ecb.com.au www.ecb.com.au

29 Snook St
Clontarf QLD 4019
Australia

Po Box 122
Margate QLD 4019
Australia

BM63SY

REPLACES: 22.08.10

REVISED: 11.05.11

FITTING INSTRUCTIONS

NM/NP PAJERO 5/00–10/06 BIG TUBE BIG TUBE™ PROTECTION BAR WITH 9000LB WARN WINCH MOUNTING VEHICLE FRONTAL PROTECTION SYSTEM (VFPS) FOR AIRBAG & ADR COMPLIANT VEHICLES

Check installation hardware before commencing.

1. Remove grille. 5 clips along top and 5 push in/out clips.
2. Remove steel under bodyguard from vehicle.
3. Remove bumper skin. 4 plastic clips in centre, 5 plastic clips (each side) and 2-10mm head bolts each side to detach inner guard, 1-10mm head self tapper (each side) at top side bumper returns (access under flare), 1-10mm head bolt (each side) at top just under indicator (access under guard below indicator), 3-10mm head bolts along top centre (where grille removed to access). Do not discard any clips or bolts. They will be useful to secure the inner guard when the protection bar is fitted.
NOTE: Exceed model - disconnect bumper lights from passenger side plug only. Disconnect headlight washer hose as bumper comes off.
4. Using hole-marking template, mark where rear steel mounting bracket is to be drilled on inside of chassis rail. Line up template with inside top of tow bracket on vehicle chassis and mark hole. **See figure 1.**
5. Centre punch mark and drill 10mm hole through inside edge of chassis only. Treat exposed steel.
6. Using zip ties (supplied), tie wiring loome to clear where mount is to be attached.
7. Splice ECB indicator / park light wiring (supplied – connected to indicator / park lights with plug) into original indicator / park light wiring. Use cable locks (supplied)
8. Using 3/8 x 2 bolt/washer on wire (supplied), bend wire to shape. Insert through lower 25mm access hole in chassis to come out through 10mm hole just drilled.
9. Attach steel mounting bracket to 3/8 x 2 bolt. Align in centre of slot hole on mount. Hold in position with front plate on steel mounting bracket approximately 0-3mm off crash can. **TIGHTEN NUT FRIM ONLY. See figures 2 and 3.**
10. Ensuring top of steel mounting bracket is level, drill a 10mm holes entirely through chassis using slot hole in steel mounting bracket as a guide. Drill in centre of slot hole for if any adjustment is necessary. Treat exposed steel.
11. Where 10mm hole has been drilled in outside of chassis, enlarge this hole to 17mm for chassis spacer to fit through. Treat exposed steel. (Use die grinder with steel cutting burr or similar to enlarge hole.)
12. Insert 40x6 alloy washer plate (supplied) between chassis and steel spacer welded to steel mounting bracket. Insert 3/8 x 5 1/2 bolt (supplied) from steel mounting bracket side into chassis. Slide chassis spacer tube (supplied) over bolt. **See figure 3.** Attach 75 x 50 x 6 alloy plate over bolt. Use 3/8 nut/washers (supplied). **FINGER TIGHTEN ONLY.**



**WORLD'S BEST
ALLOY BULLBARS**

East Coast Bullbars (ECB Pty Ltd)

Tel: 07 3897 5700

Fax: 07 3283 1168

ecb@ecb.com.au www.ecb.com.au

29 Snook St
Clontarf QLD 4019
Australia

Po Box 122
Margate QLD 4019
Australia

13. Lift winch mounting bracket (supplied) into position on inside of steel mounting bracket with rear of winch mounting bracket behind vehicle cross member. Use 3/8 x 1 ¼ bolts/nuts and washers (supplied) for securing to steel mounting brackets. **See figure 4.**
14. Recheck steel mounting bracket for alignment and **TIGHTEN** all steel mounting bracket bolts/nuts.
15. Align winch mounting bracket and **TIGHTEN IN POSITION.**
NOTE: Winch mounting bracket should lay back slightly for water run off.
16. Using 10mm hole in steel mounting bracket as a guide. Drill 10mm hole in lower chassis. Treat exposed metal. Use 3/8 x 1 ¼ bolt and nut (supplied) **See figure 5.**
17. With the use of a short 10mm drill bit and a right angle drill, drill two holes in rear of vehicle cross-member using holes in winch mounting bracket as a guide. **See figure 6.** Use 3/8 x 1 ¼ bolt with washer/wire. Bend wire to shape and feed in through hole in front of vehicle cross member. Use 3/8 nuts/washers (supplied) **FINGER TIGHTEN ONLY. TIP:** Use torch and look through end of vehicle cross member to locate holes.
18. Attach steel brace plates (supplied) to inside of steel mounting brackets. Use 3/8 x 1 ¼ bolts, nut and washers (supplied). **FINGER TIGHTEN ONLY.** Align other end with rear of vehicle cross member, **see figure 7.** Drill a 10mm hole through vehicle cross member. Use 3/8 x 1 ¼ bolt/washers and wire (supplied). Feed in through hole in cross member. **See figure 7.** Use 3/8 nuts/washers (supplied) **TIGHTEN winch mounting bracket nuts/washers and brace plate nuts and bolts.** Trim wire off with approximately 100mm wire left out of holes and tape together.
19. Attach roller fairlead to winch mount bracket. Use 3/8 x 1 ¼ bolts/nuts and washers (supplied) **TIGHTEN** in centre of slot holes. **NOTE:** Pass bolts from inside of winch mounting bracket.
20. Install winch into winch mounting bracket. Use original winch bolts with flat and spring washers (supplied). **NOTE:** Feed cable through roller fairlead as installing winch. Align winch and **TIGHTEN IN POSITION.**
21. Fit ¼ flat washers (supplied) over control box studs, then attach control box to control box bracket. Use original nuts with flat washers (supplied), **TIGHTEN** in centre of slot holes.
22. Reinstall grille.
23. Install control box wiring to winch.
24. Install control box bracket with control box to inside of winch mounting bracket. **See figure 8.** Use 3/8 x 1 ¼ bolts, nuts and washers (supplied). **TIGHTEN IN POSITION,** approximately 20mm down from bottom of grille.
25. Connect all winch wiring and **CHECK OPERATION OF WINCH.**
26. Remove upper air vents from protection bar.
27. Attach infill trims (supplied) to protection bar. Use M6 nylock nuts (supplied). Do not over tighten **FIRM ONLY. See figure 9.**
28. Fit ECB LED indicator / park lights into protection bar as per instructions supplied with the LED indicator kit. **NOTE: Ensure park light is to outside. See figure 10.**



**WORLD'S BEST
ALLOY BULLBARS**

East Coast Bullbars (ECB Pty Ltd)

Tel: 07 3897 5700

Fax: 07 3283 1168

ecb@ecb.com.au www.ecb.com.au

29 Snook St
Clontarf QLD 4019
Australia

Po Box 122
Margate QLD 4019
Australia

29. Attach protection bar to inside of steel mounting brackets. Use M14 x 40 x 1.5 bolts/nuts/washers (supplied). For top drivers side hole pre bend wire on one M40x40x1.5 bolt and insert bolt through 50mm hole in steel mounting brackets. Use air vent punch outs as access to assist bolt through hole. Access passenger side bolts/nuts through clutch lever access hole and/or passenger side air vent punch out. Use M14 nuts/washers (supplied).
30. Position protection bar up in slot holes to where infill trim just contact vehicle.
NOTE: Ensure nylock nuts that hold trim infills in place are clear of washer bottle on driver's side. Align protection bar and **TIGHTEN ALL BOLTS**. If necessary loosen ¼" nylock nuts and align polyurethane infill trims with vehicle. Retighten firm only.
31. Adjust control box to align with cut out in protection bar if necessary.
32. Connect ECB indicator / park lights. **CHECK OPERATION.**
33. Remove steel inner guard supports from vehicle and discard.
34. Fold plastic inner guard forward. Use zip ties (supplied) and the original plastic clips to secure. The plastic inner guard can also be trimmed off to suit if required.
35. Trim 45mm from front edge of steel under body guard and around gussets on winch mounting bracket. Re-fit to original position at rear and fit to winch mounting bracket at front. Use original bolts with 8mm nuts/washers (supplied) for front holes.

ENSURE NUMBER PLATE IS CLEARLY VISABLE

Note: When fitting/refitting the licence plate to the vehicle, ensure there is no obstruction to licence plate vision in accordance with local authorities. If required relocate licence plate to an alternate location.

Further VFPS Notes:

- a) Do not attach VFPS to the vehicle using anchorages not intended for this purpose (e.g. engine mounting bolts).
- b) Do not use this product for any vehicle make or model, other than those specified by the VFPS manufacturer.
- c) Do not remove the plaque or label from the VFPS.
- d) Do not modify the structure of the VFPS in any way.
- e) **No accessory or fitment should project forward of the VFPS forward profile.**
- f) **ENSURE THESE INSTRUCTIONS ARE LEFT WITH VEHICLE OWNER AND/OR OPERATOR.**

IMPORTANT INFORMATION

Periodically check bolts and nuts for correct tightness, especially if travelling on rough roads



East Coast Bullbars (ECB Pty Ltd)

Tel: 07 3897 5700

Fax: 07 3283 1168

ecb@ecb.com.au www.ecb.com.au

29 Snook St
Clontarf QLD 4019
Australia

Po Box 122
Margate QLD 4019
Australia

WORLD'S BEST
ALLOY BULLBARS

FITTING KIT

| | |
|---|--|
| 2 – Steel mounting brackets. | 2 – 8mm nuts. |
| 1 – Winch mounting bracket. | 2 – 8mm flat washers. |
| 1 – Control box bracket. | 6 – M6 nylock nuts. |
| 2 – Steel brace plates. | 6 – M6 flat washers. |
| 2 – 40 x 6mm round alloy washer plates. | 4 – ¼ flat washers. |
| 2 – 75 x 50 x 6 alloy plates (As per template). | 1 – M14 x 40 x 1.5 bolt/washer on 350mm wire |
| 2 – 78mm long 10 n.b chassis tube spacers. | 3 – M14 x 40 x 1.5 bolts. |
| 4 – 3/8 x 1 ¼ bolts/washers on 300mm wire. | 4 – 14mm nuts. |
| 2 – 3/8 x 2 bolts/washers on 300mm wire. | 7 – 14mm flat washers. |
| 6 – 3/8 nuts. | 4 – 14mm spring washers. |
| 2 – 3/8 x 5 ½ bolts/nuts. | 1 – ECB LED Indicator / Park light kit. |
| 12 – 3/8 x 1 ¼ bolts/nuts. | 6 – Cable locks. |
| 40 – 3/8 flat washers. | 6 – 200mm long zip ties. |
| 22 – 3/8 spring washers | 2 – Pajero infill trims. |



Figure 1

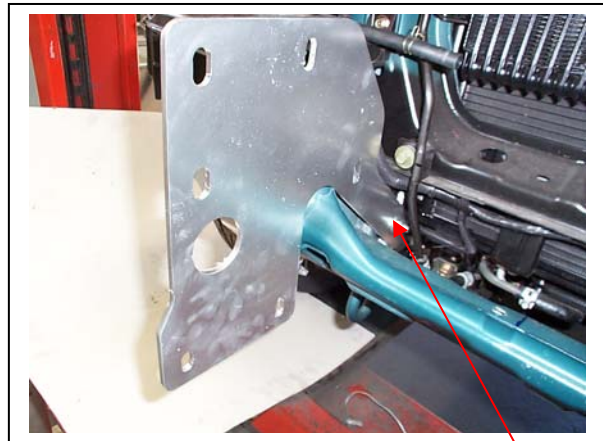


Figure 2

3/8 x 2 bolt

Chassis spacer tube on 3/8 x 5 ½ bolt

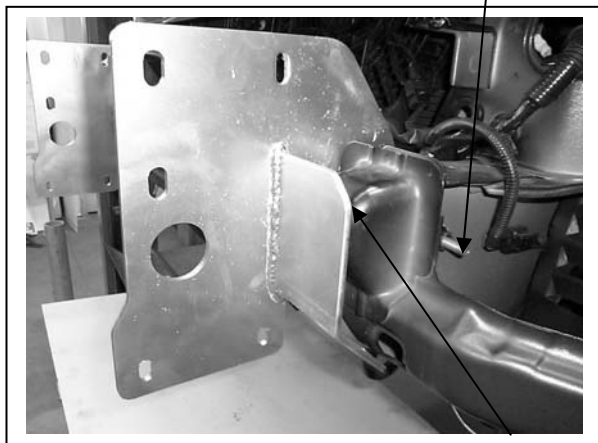


Figure 3 0-3mm clearance here

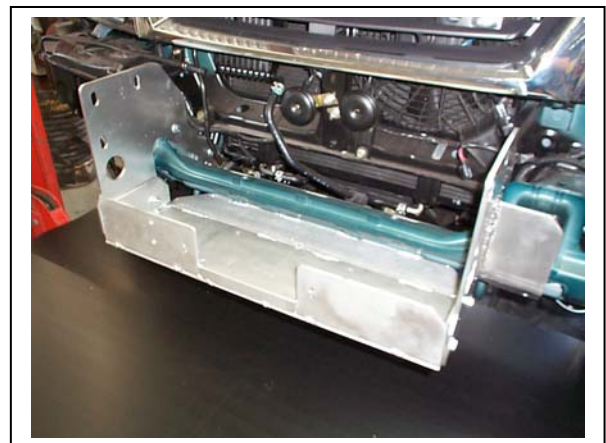


Figure 4



East Coast Bullbars (ECB Pty Ltd)

Tel: 07 3897 5700

Fax: 07 3283 1168

ecb@ecb.com.au www.ecb.com.au

29 Snook St
Clontarf QLD 4019
Australia

Po Box 122
Margate QLD 4019
Australia

WORLD'S BEST
ALLOY BULLBARS

Angle drill



Figure 5

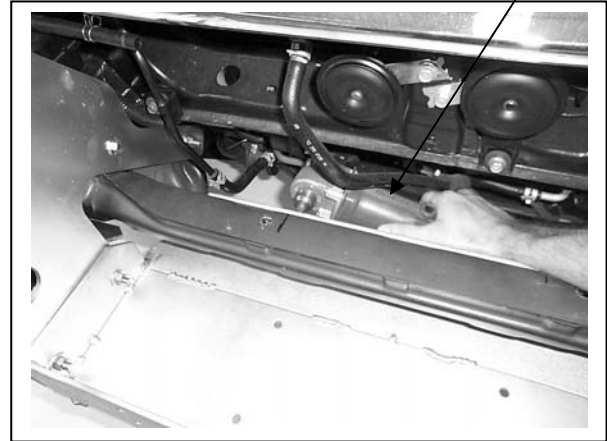


Figure 6

Steel brace plates

Approximately 20mm clearance

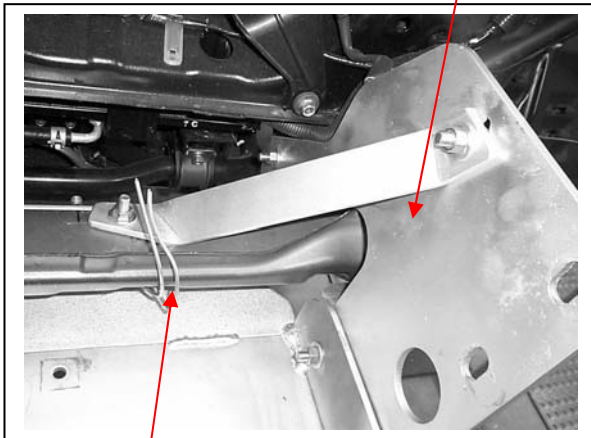


Figure 7

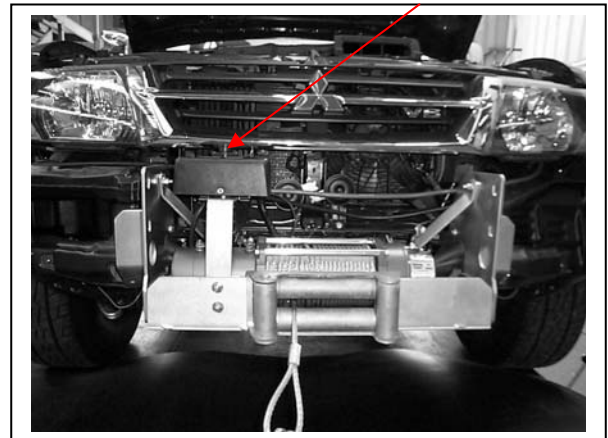


Figure 8

Feed bolts
through hole in
cross member

Attach polyurethane infill trim

Stainless steel self-tappers



Figure 9

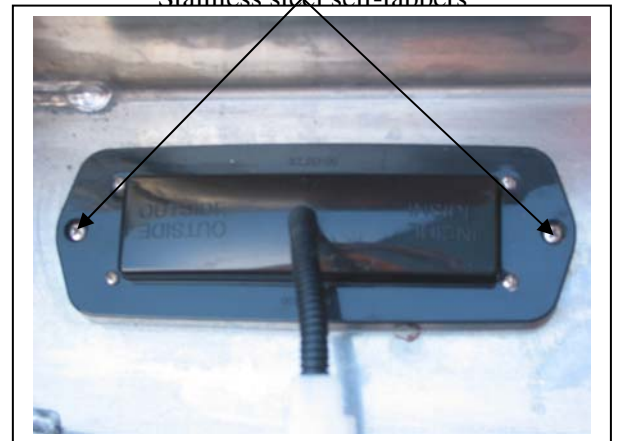


Figure 10



**WORLD'S BEST
ALLOY BULLBARS**

East Coast Bullbars (ECB Pty Ltd)

Tel: 07 3897 5700

Fax: 07 3283 1168

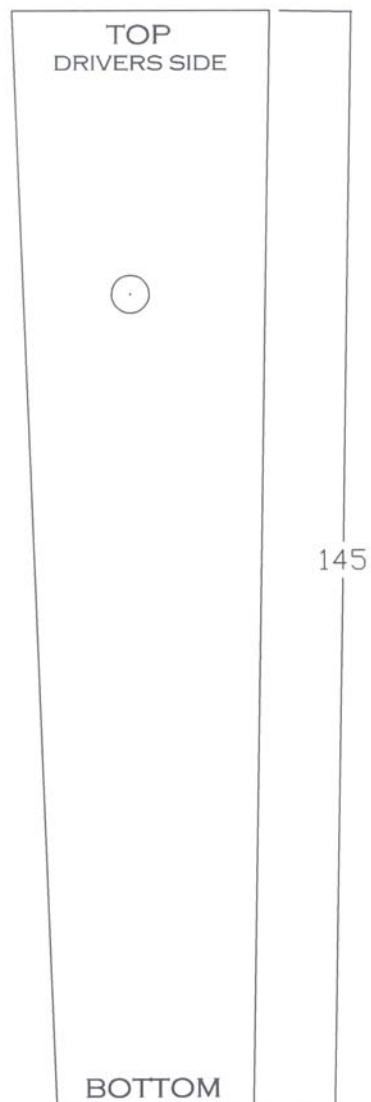
ecb@ecb.com.au www.ecb.com.au

29 Snook St
Clontarf QLD 4019
Australia

Po Box 122
Margate QLD 4019
Australia

HOLE MARKING TEMPLATE

Cut out and line up top with top of tow bracket. See **figure 1**





**WORLD'S BEST
ALLOY BULLBARS**

East Coast Bullbars (ECB Pty Ltd)

Tel: 07 3897 5700

Fax: 07 3283 1168

ecb@ecb.com.au www.ecb.com.au

29 Snook St
Clontarf QLD 4019
Australia

Po Box 122
Margate QLD 4019
Australia



**WORLD'S BEST
ALLOY BULLBARS**

East Coast Bullbars (ECB Pty Ltd)

Tel: 07 3897 5700

Fax: 07 3283 1168

ecb@ecb.com.au www.ecb.com.au

29 Snook St
Clontarf QLD 4019
Australia

Po Box 122
Margate QLD 4019
Australia

We value your comments

Dear Fitter,

ECB would like to know how you went with the installation of this product. We value your comment and may need to contact you to clarify some details so please complete your contact details clearly.

We would appreciate if you could complete as many of the following details as possible.

| | |
|-------------------------------|--|
| Your Name: | Your contact No. |
| Product Part No. | Product Invoice No. |
| Product Description: | Make, model, and year of vehicle: |
| Product Work Order No. | Company your from/Company product purchased from: |

Date of fitment: ____ / ____ / ____

Was the fitting hardware supplied complete?

Yes

No

If no what was not supplied

Did the installation go well?

Yes

No

Please provide comments

Please draw diagrams if you need to.

Post to

Reply Paid 122

PO Box 122

Margate QLD 4019

Fax to

(07) 3283 1168



**WORLD'S BEST
ALLOY BULLBARS**

East Coast Bullbars (ECB Pty Ltd)

Tel: 07 3897 5700

Fax: 07 3283 1168

ecb@ecb.com.au www.ecb.com.au

29 Snook St
Clontarf QLD 4019
Australia

Po Box 122
Margate QLD 4019
Australia



WORLD'S BEST
ALLOY BULLBARS

East Coast Bullbars (ECB Pty Ltd)

Tel: 07 3897 5700

Fax: 07 3283 1168

ecb@ecb.com.au www.ecb.com.au

29 Snook St
Clontarf QLD 4019
Australia

Po Box 122
Margate QLD 4019
Australia

DESPATCH CHECKLIST BM63SY

| | |
|--------------|--|
| Work Order # | |
| Finish: | |
| Transport: | |
| Due Date: | |

- 2 – Steel mounting brackets.
- 1 – Winch mounting bracket.
- 1 – Control box bracket.
- 2 – Steel brace plates.
- 1 – Bolt Kit.
- 1 – LED ECB indicator / park light kit.
- 2 – Polyurethane trim infills.
- 2 – ECB overrides – **Fitted to bar.**
- 2 – 6mm air scoops – **Fitted to bar.**
- 2 – 3mm air scoops – **Fitted to bar.**

**See other side of
this page for
photos of all
mounts**



Is this product “the best it can be” Yes _____ / _____
Wrapper's initials / Checker initials

If **NO** fix before continuing

All parts checked and completed by:

Nut and bolts: _____ Date __/__/__

Order control: _____ Date __/__/__

Final wrap check: _____ Date __/__/__



East Coast Bullbars (ECB Pty Ltd)

Tel: 07 3897 5700

Fax: 07 3283 1168

ecb@ecb.com.au www.ecb.com.au

29 Snook St
Clontarf QLD 4019
Australia

Po Box 122
Margate QLD 4019
Australia

WORLD'S BEST
ALLOY BULLBARS

